



Reprint Console

Quickly and Easily Reprint Items

Contents

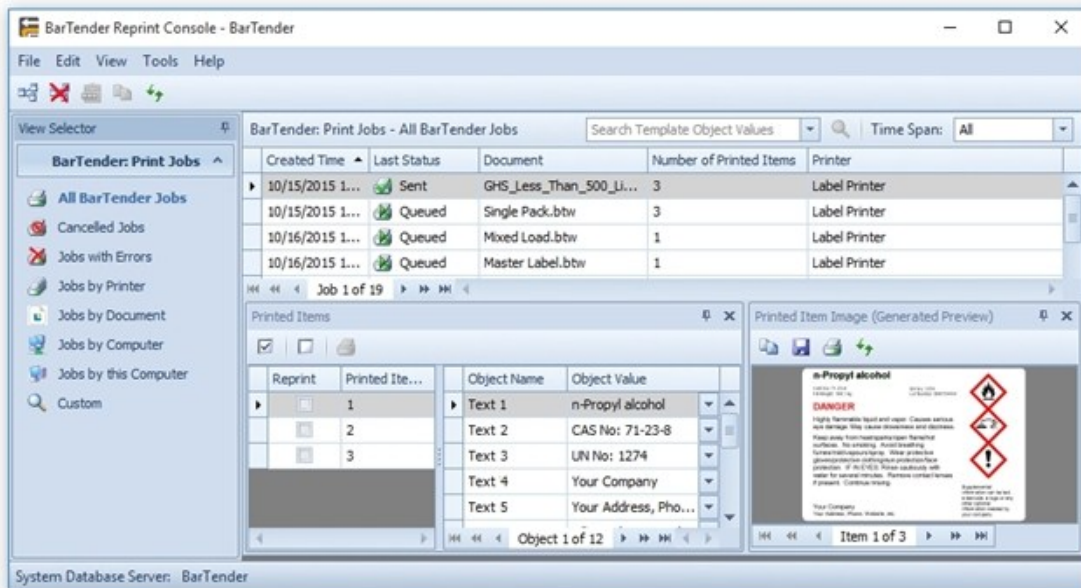
- Overview 3**
- Logging Information to the System Database 4**
 - Logging Print Job Information from BarTender 4
 - Changing the BarTender System Database 5
- Using the Reprint Console Interface 6**
 - The View Selector Pane 6
 - The BarTender: Print Jobs Pane 6
 - The Search Toolbar 6
 - The Printed Items Pane 7
 - The Printed Item Image Pane 7
 - Configure the Reprint Console Interface 8
- Reprinting Items Using Reprint Console 10**
 - The Reprint Items Dialog 10
 - Reprinting an Entire Print Job 10
 - Reprinting Specific Item(s) 11
- Related Documentation 12**

Overview

Reprint Console is a companion application to BarTender that lets you reprint items you have previously printed without having to reenter data or open the document. Reprinting all or part of a print job is as easy as locating the correct job and item in Reprint Console, clicking **Reprint** and defining your printer settings.

BarTender stores BarTender documents and print job information in the BarTender System Database. Using Reprint Console's interface, you can access images of old designs or print job information that may be otherwise inaccessible from other parts of BarTender's interface.

Reprint Console is available in both Automation editions of BarTender.



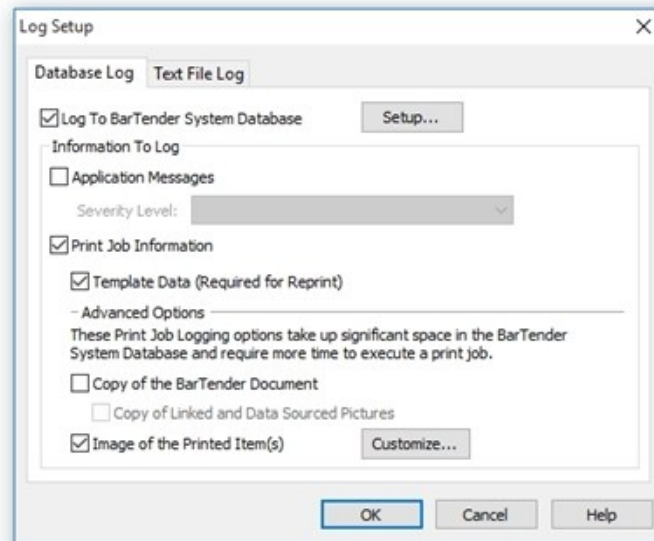
Logging Information to the System Database

Reprint Console accesses information in the BarTender System Database to process and reprint your items. But in order to view the information, you must first enable logging for print job information.

For more information on setting up the BarTender System Database, refer to the [BarTender System Database Setup](#) topic in the BarTender help system.

Logging Print Job Information from BarTender

1. Open BarTender.
2. From the **Administer** menu, select **Log Setup**. The **Log Setup** dialog opens.
3. Select the **Database Log** tab if it's not already selected.
4. Enable **Log To BarTender System Database**.
5. Under **Information to Log**, enable **Print Job Information** and **Template Data**.
6. If you want Reprint Console to be able to access an image of each print job, enable **Image of the Printed Item(s)**. Note that this option takes up significant space in the BarTender System Database and can require more time to execute print jobs from BarTender.
7. Click **OK** to close the **Log Setup** dialog.

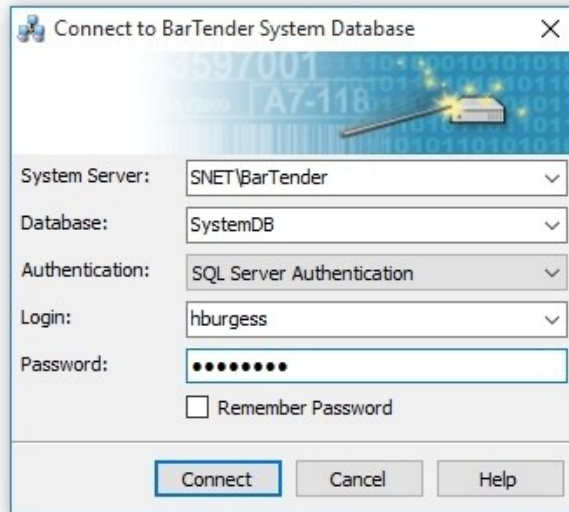


For more information, refer to the [Log Setup Dialog](#) topic in the BarTender help system.

Changing the BarTender System Database

Different instances of BarTender can be configured to log to different System Databases. You can change the system database you're connected to in order to view print information from a different instance of BarTender.

1. From the Reprint Console **File** menu, select **Disconnect System Database**.
2. Again from the **File** menu, select **Connect to System Database**. The **Connect to BarTender System Database** dialog opens.



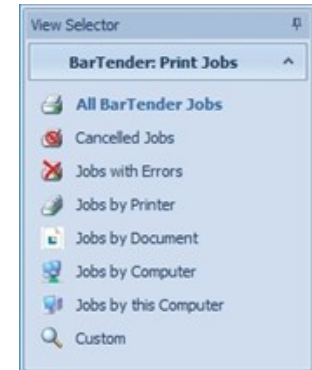
3. Use the dropdown menus to choose a new system database, and click **Connect**. If you haven't previously connected to other databases, the fields will be blank, and you'll need to manually connect to the new database:
 - a. From the **System Server** dropdown list, select **<browse for more...>**. The **Browse for BarTender System Servers** dialog opens.
 - b. Select the system server you want, and click **OK** to close the dialog.
 - c. In the **Database** field, enter the name of an existing BarTender database, and click **Connect**.

Using the Reprint Console Interface

Reprint Console's main functionality is the ability to reprint your items from almost any pane. Additionally, you can view print job and printed item information, filter print records, search for specific print jobs or copy and save images of the items printed in a print job.

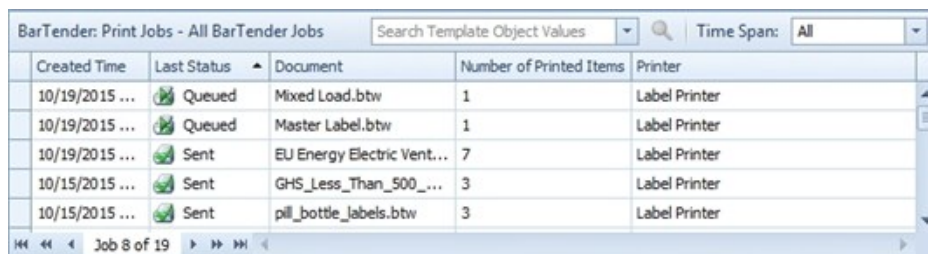
The View Selector Pane

By default, the **View Selector** pane appears docked on the left side of the Reprint Console window, and provides easy access to the items you may need to reprint. All of the views in the **View Selector** pane display filtered data for your perusal. For example, you can view all BarTender print jobs, or simply those jobs with errors. Or, if you know the document you want to reprint, you can view all print jobs for that BarTender document.



The BarTender: Print Jobs Pane

Any jobs that you print from BarTender will appear in the **BarTender Print Jobs** pane. Using this pane, you can filter, sort and view print job information returned by BarTender.

A screenshot of the 'BarTender: Print Jobs - All BarTender Jobs' pane. At the top, there is a search bar labeled 'Search Template Object Values' and a 'Time Span' dropdown set to 'All'. Below this is a table with the following columns: 'Created Time', 'Last Status', 'Document', 'Number of Printed Items', and 'Printer'. The table contains five rows of data.

Created Time	Last Status	Document	Number of Printed Items	Printer
10/19/2015 ...	Queued	Mixed Load.btw	1	Label Printer
10/19/2015 ...	Queued	Master Label.btw	1	Label Printer
10/19/2015 ...	Sent	EU Energy Electric Vent...	7	Label Printer
10/15/2015 ...	Sent	GHS_Less_Than_500_...	3	Label Printer
10/15/2015 ...	Sent	pill_bottle_labels.btw	3	Label Printer

At the bottom of the pane, there are navigation arrows and the text 'Job 8 of 19'.

You can use this information to:

- Reprint entire print jobs.
- Check the status of BarTender print jobs.
- View the item's print history from the time the job is created to the time when it is sent to the printer.

In addition, the context menu lets you copy information and resave the printed document as a new BarTender document.

The Search Toolbar

The search toolbar lets you filter the records in the **BarTender: Print Jobs** pane. Using the search toolbar, you can search for specific text and/or define a time span to filter data stored in the BarTender System Database.

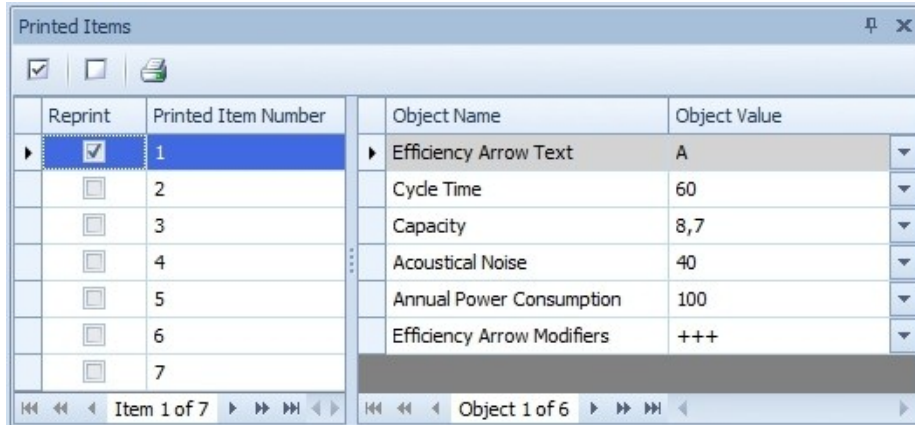


The Printed Items Pane

The **Printed Items** pane displays each of the items (labels, tags, cards, etc.) printed in a print job. If you have a dynamic design, where the data or position of objects differ between multiple items in a print job, this view lets you see exactly what printed on *each* individual item.

From this view, you can:

- Select specific items to reprint.
- View the name and value of each of the objects in each item printed in the print job.



The Printed Item Image Pane

The **Printed Item Image** pane displays a preview image of the item selected in the **Printed Item** pane. This preview image helps you visually identify the item(s) you want to reprint *before* processing the print job. You can also copy or save the image from its context menu.






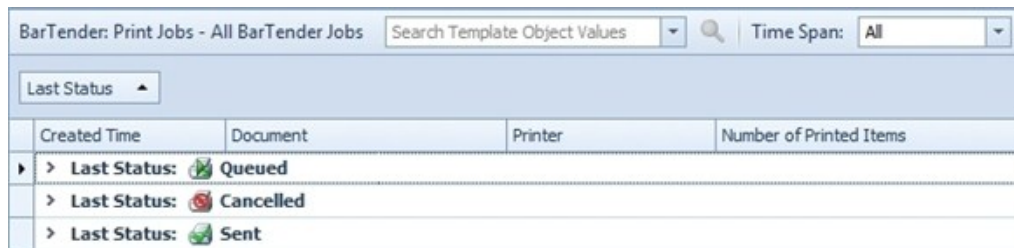
Configure the Reprint Console Interface




Like most other applications in the BarTender Suite, you can configure the layout of Reprint Console by sorting, adding, removing, and resizing columns and panes.

Columns

Columns in the interface can be sorted, grouped and configured in a number of ways:




- **Sort columns:** Click  to sort the contents of a column. Click  to reverse the sort.
- **Reposition a column:** Simply drag the heading left or right using your mouse.
- **Remove an existing column:** Right-click any column header to display a list of available columns. Uncheck any column that you don't want to appear in the interface.
- **Add a column:** Right-click on any column header to display a list of available columns. Click on any unchecked column to display it.
- **Resize a column:** Mouse over the side of the column heading. When you see the resize cursor , click and drag the column to change its width.
- **Group columns:** From a column header's context menu, select **Show Group By Box**. When the box appears, drag the column header to the box. The contents of the column appear in the central display pane, where you can expand each item to view details.





Created Time	Document	Printer	Number of Printed Items
> Last Status: 	Queued		
> Last Status: 	Cancelled		
> Last Status: 	Sent		

Panes

Panes can be resized, moved, floated, or pinned.

- **Resize panes:** Mouse over the side, top, or bottom of the pane. When you see the resize cursor ( or ) , click and drag the pane to change its width.
- **Move panes:** You can move and re-dock panes into different locations on the screen, or leave one or more panes floating over the other panes. To move a pane, click the pane name, and drag it in the direction you want to move it. Select the docking arrow  to place the pane.
- **Float panes:** If you move a pane out of place but don't select a docking arrow, it will "float" above the other panes. You can even move it out of the Reprint Console window to examine it separately. To dock a floating pane, move it back to the Reprint Console window and select a docking arrow.
- **Remove panes:** Click the **x** at the upper-right corner of a pane to remove it from the Reprint Console window. You can also select which panes to display from the Reprint

Console **View** menu. You can restore the interface to its original configuration at any time by selecting **Restore Default View** from the **View** menu.

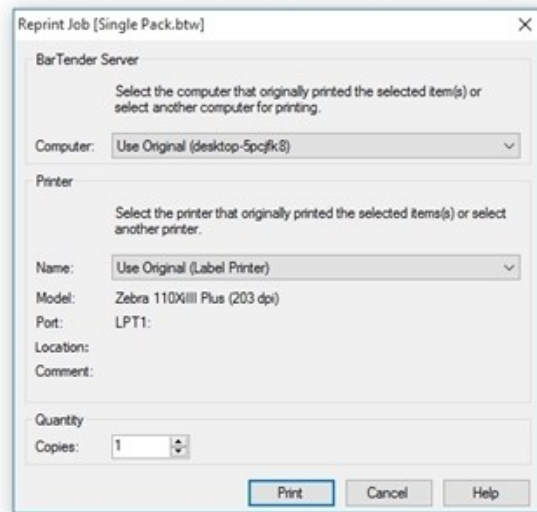
- **Un-pin panes:** Click the vertical pin  at the upper-right of a pane to "roll it up" into a tab along the side of the Reprint Console window, getting it out of the way of the other panes. Hover your mouse over the tab to view the pane. To pin a pane back into place, click the horizontal pin  at the upper-right of the pane when the pane is visible.

For more information on the Reprint Console interface, refer to the [Using the Reprint Console Interface](#) book in the BarTender help system.

Reprinting Items Using Reprint Console

The Reprint Items Dialog

Reprint Console can, regardless of where the print job originated, redirect any reprint job to any computer on the network, and/or any network printer. The **Reprint Items** dialog, which appears whenever you reprint items from Reprint Console, lets you change the computer from which you want the print job to originate or change the printer so that you don't have to re-create the original hardware and software configuration. Even if you want to use a completely different brand of printer that uses a different printer language, you can still use it to reprint items from past print jobs.



Reprinting an Entire Print Job


To reprint an entire print job, locate the job in the **BarTender: Print Jobs** pane. Select **Reprint** from the print job's context menu.

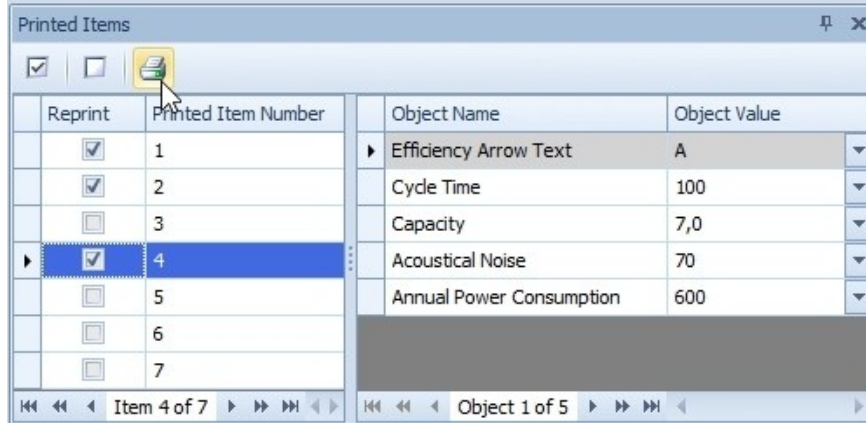


Reprinting Specific Item(s)

If you wish to reprint only sections of a print job, you can do so by specifying the exact items you want to reprint.


From the Printed Items Pane

1. In the **Printed Items** pane, check the item(s) you want to reprint.
2. Click the **Reprint** icon .



You can also select **Reprint Checked Item(s)** from the context menu of any column in the **Printed Items** pane.

From the Printed Item Image Pane

When you select an item in the **Printed Items** pane, a preview image of that item shows up in the **Printed Item Image** pane. To reprint *only this item*, click the **Reprint** icon  or select **Reprint Item** from the image's context menu.



Related Documentation

White Papers and Manuals

- Administration Console
- History Explorer
- BarTender System Security

For downloadable versions, visit:

<http://www.seagullscientific.com/support/white-papers>

BarTender Help System

- [Reprint Console](#)
- [Setting up the BarTender System Database](#)
- [Log Setup Dialog](#)

