



Installing Drivers by Seagull™

How to Properly Install, Upgrade and
Remove Drivers by Seagull™

Contents

Overview	3
Downloading Printer Drivers	4
Downloading Your Printer Driver	4
Installing Drivers by Seagull	5
Installing the Printer Driver for your Printer	5
Considerations for USB Printers	7
Upgrading Printer Drivers	8
Identifying the Current Version of Your Existing Printer Driver	8
Performing a Printer Driver Upgrade	8
Importing and Exporting Printer Driver Settings	10
Removing Printer Drivers	11
Related Documentation	13

Overview

Seagull Scientific is the world's largest developer of true Windows drivers for industrial printers and proud to be the official driver supplier to many well-known printer manufacturers.

Drivers by Seagull™ bring standard printing functionality to any Windows program. When used with our BarTender design and print software, they can take advantage of special high-performance printing features that may not be available to other Windows programs.

This white paper covers how to download, install, upgrade and remove Drivers by Seagull at any time.

For more information about Drivers by Seagull, refer to the **Drivers by Seagull** white paper:

<http://www.seagullscientific.com/support/white-papers>

Downloading Printer Drivers

Before installing a Seagull printer driver, you should first verify that a printer driver exists for your printer. Seagull Scientific manufactures drivers for a wide range of specialty printers and devices.

Drivers by Seagull are distributed with every BarTender installation DVD. In addition, they are available to the public for free. To see a list of printers supported by Seagull, visit Seagull's **Free Windows Printer Drivers** page at:

<http://www.seagullscientific.com/drivers/windows-printer-drivers/>

Downloading Your Printer Driver

If you do not have a BarTender DVD available, you will need to download and unpack the printer driver system files to your computer.

1. On the **Free Windows Printer Driver Downloads** page (linked above), click on the manufacturer of your printer.
2. From the manufacturer page, click the **Download** button.
3. Once the file is saved to your computer, double-click the downloaded printer driver file to begin.
4. Accept the license agreement, and click **Next**.
5. Follow the installer's directions. By default, the driver system files are installed to the C:\Seagull directory.

Your driver system files include the DriverWizard utility, which was developed by Seagull to streamline the process to install, remove and upgrade your printer drivers. It is strongly recommended that you use the Seagull Driver Wizard, whenever possible, to install and upgrade your drivers. All procedures in this white paper assume that you are using this utility.

Running the Seagull Driver Wizard

You can run the Seagull Driver Wizard from your installation DVD, or:

1. Locate the installation directory for your driver system files. By default, they are installed to the C:\Seagull directory.
2. Double-click DriverWizard.exe.

Installing Drivers by Seagull

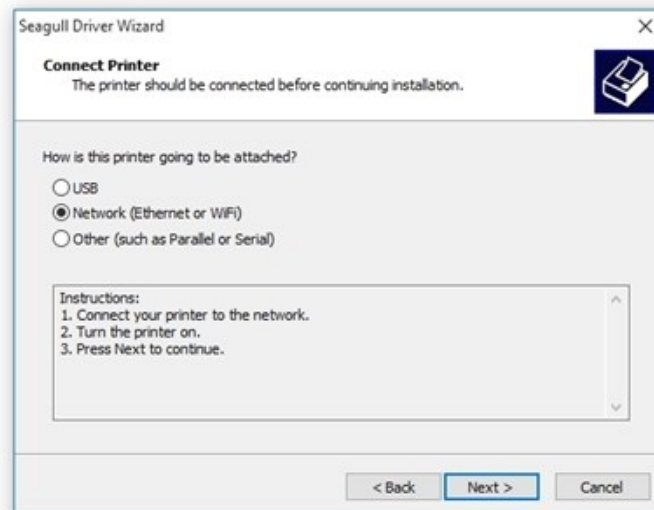
When installing, the Seagull Driver Wizard looks for driver install files stored in the same folder it resides. The wizard will walk you through selecting the manufacturer and model of your printer, defining and configuring the port to which it is connected, naming the printer, setting it as the default printer and sharing it with other network users. Once these selections are made, the Driver Wizard will install the driver files for your printer.

Installing the Printer Driver for your Printer

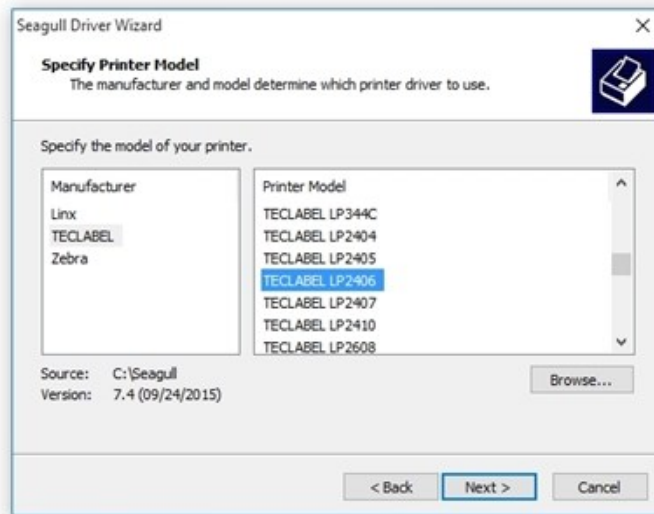
1. From the **Seagull Driver Wizard**, select **Install printer drivers**. Click **Next**.



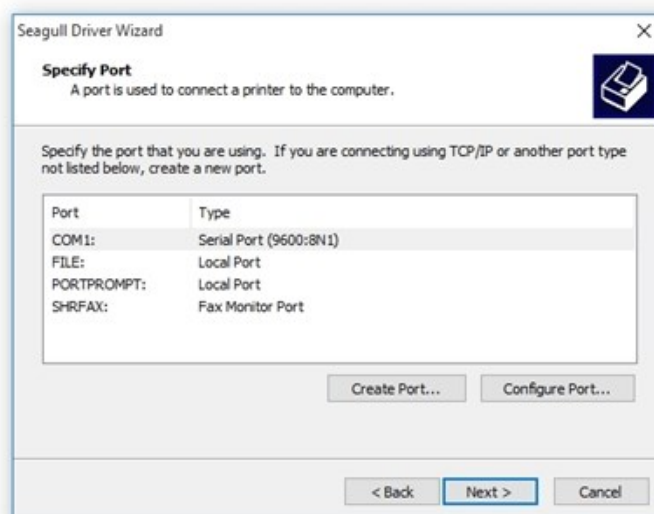
2. Verify that your printer is connected to your computer and is turned on. Select the connection type and click **Next**. If you are using a USB connection, the driver will be installed at this time. For other connection types, continue to the next step.



3. In the left column, select the manufacturer (brand) of your printer. In the right column, select your printer model. Click **Next**.

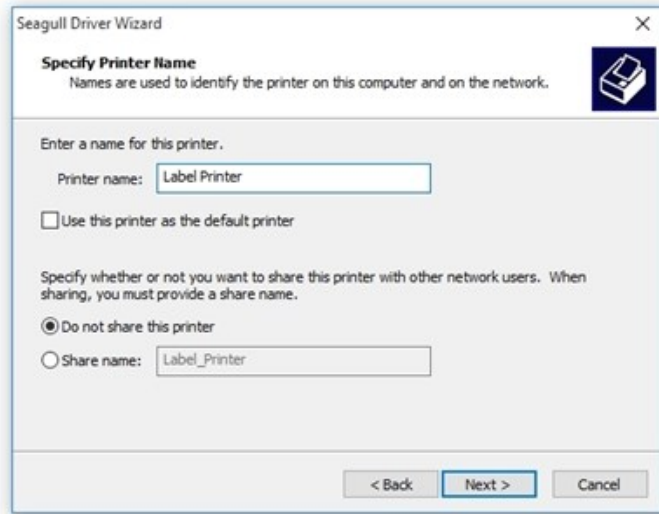


4. Specify the port you are using for the printer. You can optionally set configuration settings for the selected port using the **Configure Port** button. If the desired port is not found, create a new port using the **Create Port** button. When you're done setting the port, click **Next**.



5. Enter a name for your printer in the **Printer name** field.

6. Optionally, set this printer as the default printer and/or share the printer with other network users. Click **Next** to continue.



7. Click **Finish** to install the drivers. A system restart may be necessary.

NOTE: Always allow your system to reboot after installing Drivers by Seagull. They will not function properly if you don't.

Considerations for USB Printers

A few customers have reported issues when installing printer drivers over a USB connection. Connection failure can occur if a printer manufacturer has assigned the same ID name to multiple printer models.

Suppose you have a printer on your system from the (fictional) PrintWise company. PrintWise gives all of its printer models the same ID name: "Label Printer". When you attempt to connect to your printer using the **Seagull Driver Wizard**, the Wizard cannot automatically tell which PrintWise model it is looking at, because all PrintWise printers share the same ID name. The **Seagull Driver Wizard** will open a list of all possible PrintWise models you may be trying to connect to. To proceed, scroll through the list and determine which printer you are using. Select it, and finish the Wizard.

NOTE: When installing Drivers by Seagull, always use the **Seagull Driver Wizard**. Do not use the Windows Add Printer wizard. It is not designed to work with Drivers by Seagull, and it can cause system problems.

Upgrading Printer Drivers

Seagull Scientific regularly provides updates to Drivers by Seagull in order to support current printer hardware and firmware. If your printer is giving you trouble, it is probably time to upgrade. The latest version can be downloaded by following the instructions in the [Downloading Your Printer Driver](#) section of this white paper.

WARNING: The **Seagull Driver Wizard** should always be used to upgrade printer drivers. If you upgrade using the Windows Add Printer Wizard, it may not upgrade all driver files correctly, leaving the printer driver in a corrupted state.

When you perform a printer driver upgrade, the Seagull Driver Wizard compares all currently installed Seagull drivers with the drivers available in the driver installation folder. A list of both is presented side by side, so that the user may select which printers will be upgraded. If a printer is upgradeable, it will be selected by default.

Identifying the Current Version of Your Existing Printer Driver

These steps are not necessary to upgrade your drivers, but they can help you determine whether you are running the latest version.

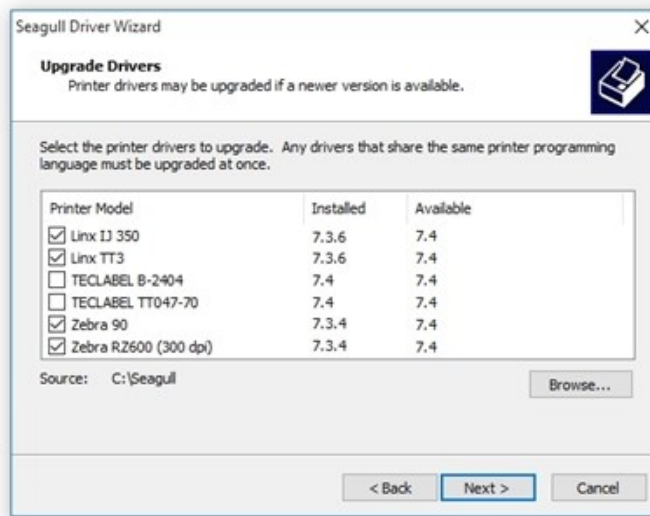
1. Open the **Devices and Printers** folder on your computer.
2. Locate the printer whose driver version you want to identify, and open the **Printer properties** dialog from the context menu.
3. If it's not already open, click the **About** tab.
4. Click the **Version** button.

Performing a Printer Driver Upgrade

1. From the **Seagull Driver Wizard**, select **Upgrade printer drivers**. Click **Next**.



2. Select the printer models to upgrade and/or deselect models you do not want to upgrade. Click **Next**.

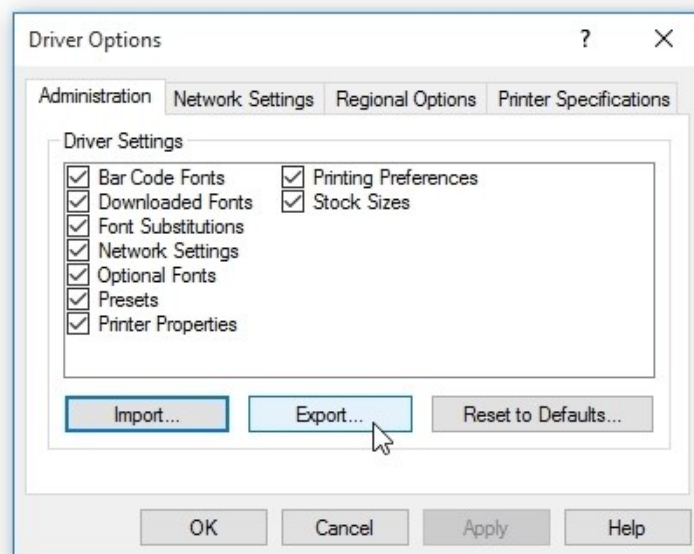


3. Click **Finish** to close the wizard and install the upgrades. A system restart may be necessary.

Importing and Exporting Printer Driver Settings

BarTender offers a tool for exporting driver settings to another computer, or importing driver settings to your computer. Consider the following example: you just received a new computer, and you want to move your printer driver from your old machine to the new one, keeping all of your settings. While you can't "move" the printer driver, you can install the driver on the new computer, then import the saved settings to the driver.

1. In Windows, open **Devices and Printers**.
2. Locate the printer you want to import or export settings from. From the printer's context menu, select **Printer Properties** to open the **Printer Properties** dialog.
3. Click the **Tools** tab.
4. Click the **Driver Options** button. The **Driver Options** dialog opens. From this dialog, you can import or export driver settings.



To export (or save) your printer driver settings, select the type(s) of settings you want to export from the list, and then click **Export**. A Windows Explorer window opens. Name the *.sds file, and save it wherever you want (such as a network drive or another computer).

To import previously saved printer driver settings, click the **Import** button. A Windows Explorer window opens. Locate the *.sds file for that printer, select it, and click **Open**.

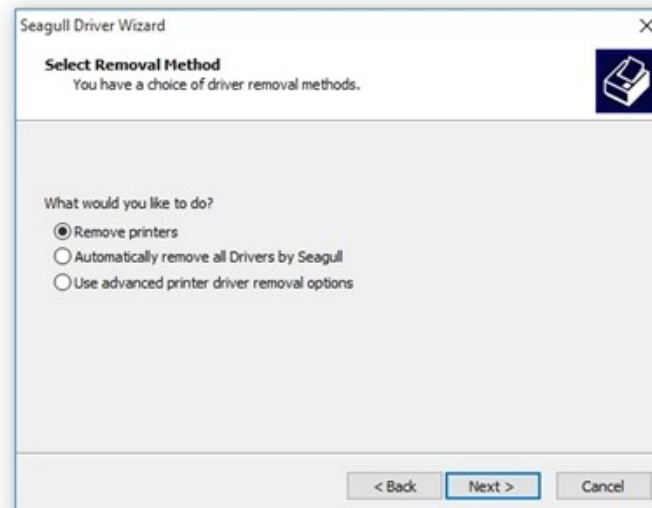
Removing Printer Drivers

Drivers by Seagull can be removed from your computer when you no longer need them. To fully remove printer drivers installed on a PC, you should use the **Seagull Driver Wizard**. This will remove all files, configurations and registry settings for any of the selected printers. Note that this is not the same as simply removing your printer. If you wish to later reinstall the printer driver, you will need to re-download and install the driver files to your computer.

1. From the **Seagull Driver Wizard**, select **Remove printer drivers**. Click **Next**.



2. On the **Select Removal Method** screen, select the removal method, and follow the steps to complete the wizard. For more information about each method, refer to the sections below.



Remove Printers

1. If you selected **Remove printers**, check the box next to the printer model(s) you wish to remove and click **Next**.
2. Click **Finish** to remove the selected drivers.

Automatically Remove All Drivers by Seagull

If you selected **Automatically remove all Drivers by Seagull**, click **Finish** to remove the drivers. A system restart may be required.

WARNING: This option will remove *all* Drivers by Seagull you've downloaded for *all* printers.

Use Advanced Printer Driver Removal Options

1. If you selected **Use advanced printer driver removal options**, check the box next to the printer model(s) you wish to remove and click **Next**.
2. You will now have the option to individually remove driver components, such as **Remote Desktop Easy Print** and **Printing Preferences**. You will also be given the opportunity to individually remove driver files.
3. When you have completed your selections, click **Finish** to remove the selected drivers and components. A system restart may be required.

Related Documentation

White Papers and Manuals

- Drivers by Seagull™
- Optimizing Print Performance
- Status Monitoring
- Printer Maestro

For downloadable versions, visit:

<http://www.seagullscientific.com/support/white-papers>

