



## **32-bit and 64-bit BarTender**

How to Select the Right Version for Your Needs

# Contents

---

- Overview ..... 3**
  - The Difference Between 32-bit and 64-bit ..... 3
- Find Out if Your Computer is Capable of Running 64-bit Software ..... 4**
- Database and Operating System Considerations ..... 6**
  - Databases ..... 6
  - Operating Systems ..... 6
- SDK Considerations ..... 7**
- Integration Platform Considerations ..... 8**
- FAQ ..... 9**
- Related Documentation ..... 10**

## Overview

Before BarTender 2016, BarTender software was only available in a 32-bit version. In BarTender 2016, all editions of BarTender are available in a 64-bit version as well. The purpose of this white paper is to help you decide whether you should install the 32-bit version or the new 64-bit version when you are ready to install BarTender.

For instructions on the installation process, see the [Installing BarTender](#) and [Choosing What to Install](#) topics in the BarTender Help system.

### ***The Difference Between 32-bit and 64-bit***

The terms *32-bit* and *64-bit* refer to how a computer's central processing unit (CPU) handles information. A 64-bit processor can handle much more random access memory (RAM) than a 32-bit processor. If your computer has more than 4 gigabytes (GB) of RAM, you almost certainly have a 64-bit processor.

*32-bit* and *64-bit* also refer to operating systems and software. A 32-bit processor can run only 32-bit software, including the operating system (OS). A 64-bit processor can run both compatible 32-bit and 64-bit software, including the operating system.

To run 64-bit software, you must have a 64-bit operating system.

**NOTE:** Windows Server has been 64-bit only since 2008 R2. After 2008 R2, there is no 32-bit option for a server OS available.

### **Difference in Performance**

With BarTender, the difference in performance between the 32-bit and 64-bit versions is minimal, but a 64-bit installation can be slightly faster and more stable. Seagull Scientific recommends that you install the 64-bit version of BarTender whenever possible.

## Find Out if Your Computer is Capable of Running 64-bit Software

Your computer's ability to run 64-bit software depends on two things: the operating system and the processor.

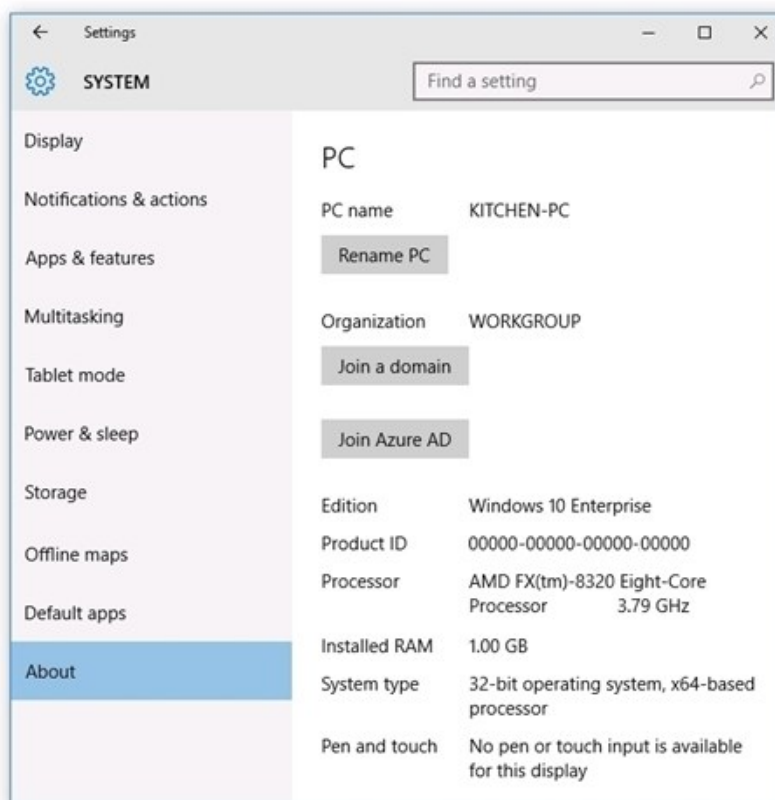
- If you have a 64-bit operating system and a 64-bit processor, you can run 64-bit software.
- If you have a 32-bit operating system and a 64-bit processor, you cannot run 64-bit software.
- If you have a 32-bit operating system and a 32-bit processor, you cannot run 64-bit software.

You can view your operating system and processor information using the Windows **Start** menu.

### In Windows 10

You can find out whether you have a 32-bit or 64-bit processor and/or operating system from the **System** dialog.

1. Open the **Start** menu.
2. Select **Settings**.
3. On the **Settings** page, click **System**.
4. On the **System** page, click **About**.
5. The **System type** option describes your operating system and processor information.

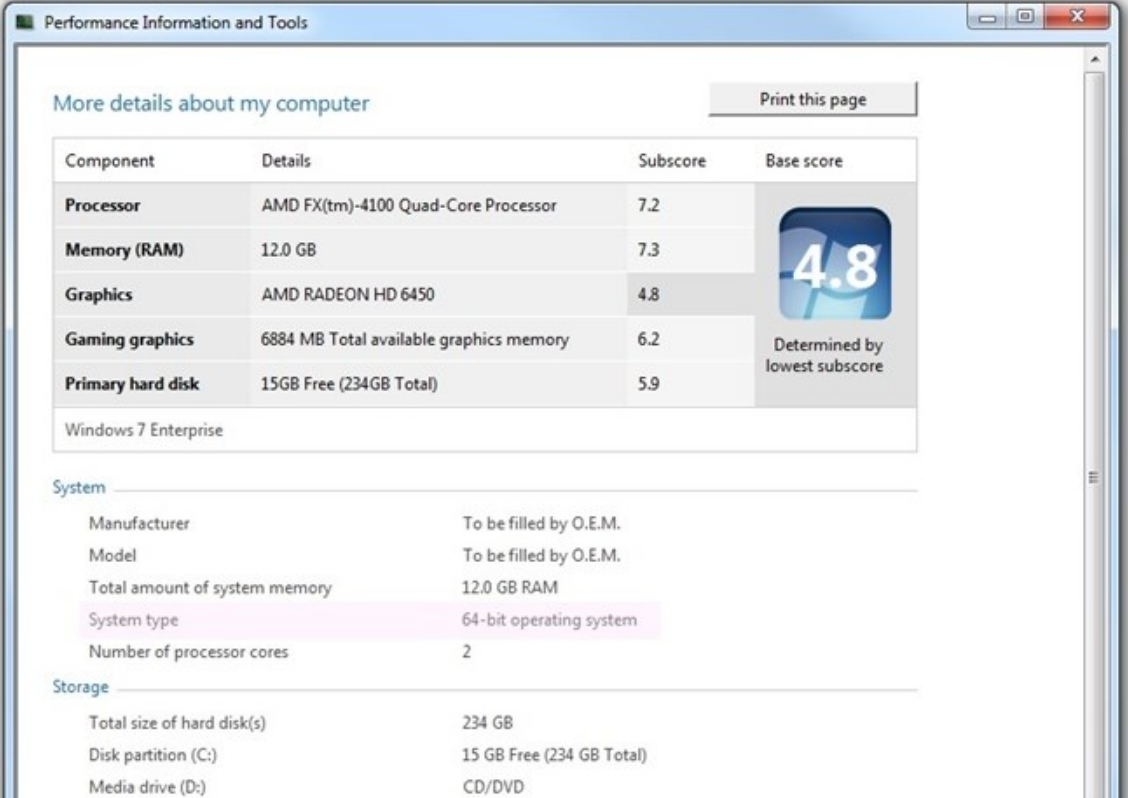


## In older versions of Windows

You can find out whether you have a 32-bit or 64-bit processor and/or operating system from the **Performance Information and Tools** dialog, accessed from the Windows **Start** menu.

**NOTE:** The process to access processor performance information and tools may vary depending on the version of Windows you are running. If you are in doubt, check your computer's documentation to see the processor type.

1. Open the **Start** menu.
2. In the search field, type **Performance Information and Tools**.
3. Click the **View and print detailed performance and system information** or **View and print details** link.
4. In the **System** section, the **System Type** option describes the type of operating system you are using. If it is a 64-bit system, you have a 64-bit processor, and you can run 64-bit software. If it is a 32-bit system, you might still have a 64-bit processor. See step 5.
5. Under **64-bit capable**, see whether or not your system can run 64-bit software. (If your computer is currently running a 64-bit version of Windows, you won't see the **64-bit capable** listing.)



The screenshot shows the 'Performance Information and Tools' window. At the top, it says 'More details about my computer' with a 'Print this page' button. Below this is a table with columns for Component, Details, Subscore, and Base score. The table lists Processor (AMD FX(tm)-4100 Quad-Core Processor, Subscore 7.2), Memory (RAM) (12.0 GB, Subscore 7.3), Graphics (AMD RADEON HD 6450, Subscore 4.8), Gaming graphics (6884 MB Total available graphics memory, Subscore 6.2), and Primary hard disk (15GB Free (234GB Total), Subscore 5.9). A large '4.8' score is displayed on the right, with the text 'Determined by lowest subscore' below it. Below the table, the operating system is identified as 'Windows 7 Enterprise'. The 'System' section lists: Manufacturer (To be filled by O.E.M.), Model (To be filled by O.E.M.), Total amount of system memory (12.0 GB RAM), System type (64-bit operating system), and Number of processor cores (2). The 'Storage' section lists: Total size of hard disk(s) (234 GB), Disk partition (C:) (15 GB Free (234 GB Total)), and Media drive (D:) (CD/DVD).

Component	Details	Subscore	Base score
Processor	AMD FX(tm)-4100 Quad-Core Processor	7.2	4.8 Determined by lowest subscore
Memory (RAM)	12.0 GB	7.3	
Graphics	AMD RADEON HD 6450	4.8	
Gaming graphics	6884 MB Total available graphics memory	6.2	
Primary hard disk	15GB Free (234GB Total)	5.9	

Windows 7 Enterprise

**System**

Manufacturer	To be filled by O.E.M.
Model	To be filled by O.E.M.
Total amount of system memory	12.0 GB RAM
System type	64-bit operating system
Number of processor cores	2

**Storage**

Total size of hard disk(s)	234 GB
Disk partition (C:)	15 GB Free (234 GB Total)
Media drive (D:)	CD/DVD

# Database and Operating System Considerations

## Databases

Although Seagull Scientific recommends that you install the 64-bit version of BarTender whenever possible, there are exceptions.

If you need to use 32-bit external database drivers, you will need to install the 32-bit version of BarTender. Types of external database drivers include:

- OLE DB
- ODBC
- Excel
- Access

Natively supported databases, such as Microsoft SQL Server, will work with either 32-bit or 64-bit BarTender.

## Operating Systems

When you are making the decision whether to install the 32-bit version or 64-bit version of BarTender, keep in mind that the BarTender drivers and your operating system (OS) drivers must match, or be compatible.

If you have a 32-bit OS, you *must* install the 32-bit version of BarTender. Your OS will not support the 64-bit version, even if you're running it on a 64-bit processor.

If you have a 64-bit version of Windows, you may install either the 64-bit or the 32-bit version of BarTender. The 64-bit version is recommended, but you may need to install the 32-bit edition if you are using certain OLE DB or ODBC drivers (as described above), or if you need to develop a 32-bit application using the BarTender .NET SDK.

See the quick reference table below:

Processor	Operating System	Can install 32-bit client	Can install 64-bit client
32-bit	32-bit	Yes	No
64-bit	64-bit	Yes	Yes
64-bit	32-bit	Yes	No

## SDK Considerations

If you have a custom 32-bit print client application that previously used BarTender's 32-bit Print SDK (Seagull.BarTender.dll), you must install the 32-bit version of BarTender. The 64-bit version will not work with your application. However, you can install the 32-bit version of BarTender even if you have a 64-bit processor and a 64-bit OS. Refer to [Database and Operating System Considerations](#).

If you will be using the BarTender SDKs to write a 64-bit program with ActiveX, you *must* install the 64-bit version of BarTender.

**NOTE:** In addition to introducing 64-bit BarTender, Seagull Scientific has also moved to .NET 4.0. Because of this, a client application compiled to run against BarTender 10.1 will not work out of the box with BarTender 2016; it will need to be rebuilt. Since you need to rebuild the application targeting .NET 4.0 anyway, you may wish to also change the architecture of the application to 64-bit (assuming your application has no other 32-bit dependencies).

## Integration Platform Considerations

Running a 32-bit version of BarTender on a 64-bit OS is **not supported** when using the BarTender Integration Platform. If you plan to use Integration Builder, ensure that you are running 32-bit BarTender on a 32-bit operating system, or 64-bit BarTender on a 64-bit operating system.

For more information on the BarTender Integration Platform, refer to the following white papers:

- [BarTender Integration Methods](#)
- [Integrating with BarTender Integration Builder](#)



## FAQ

### **Is the 64-bit version of BarTender "better" than the 32-bit version?**

No. Both versions have full functionality, and contain all of the new features implemented into BarTender 2016. A 64-bit version may be slightly faster and more stable than a 32-bit version.

### **Do I have to use the new 64-bit version of BarTender?**

No. However, if you have a 64-bit processor and a 64-bit OS, the 64-bit version is optimal.

### **Is there any reason to install the 32-bit version of BarTender on my 64-bit OS?**

You will need to install 32-bit BarTender if:

- You have a custom 32-bit print client application that uses a previous version of the BarTender .NET SDK (Seagull.BarTender.dll).
- You are using a 32-bit external database driver, such as older versions of Excel or Access, because you are unable to install the 64 bit version(s).

### **I got a "Database Software Conflict" error while trying to install BarTender. What does that mean?**

It means that you are trying to install 64-bit BarTender on a 32-bit system. You need to install 32-bit BarTender.

### **If I write a 32-bit application, will it run on the 64-bit version of BarTender?**

No.

If you write a 32-bit application using CPP or .NET, you must use the 32-bit Seagull.BarTender.dll with a 32-bit BarTender installation.

If you write a 64-bit application using CPP or .NET, you must use the 64-bit Seagull.BarTender.dll with a 64-bit BarTender installation.

## Related Documentation

### White Papers and Manuals

- BarTender Version Upgrades
- BarTender Integration Methods
- Integration with BarTender Integration Builder

For downloadable versions, visit:

<http://www.seagullscientific.com/support/white-papers>

### BarTender Help System

- [Installing BarTender](#)
- [Reading Data from Databases](#)

