

White Paper

What's New in BarTender 7.74

A Summary Look at the
New Features in BarTender 7.74

Contents

- Introduction..... 2**
- New Support For Xml Capable Printers 3**
- New Advanced Label Media Handling..... 4**
 - Automate Media Handling Options 4**
- Improved Page Setup..... 5**
 - New Page Options..... 5**
 - New Label Gap / Pitch Support..... 5**
 - Tray Support 6**
- Circles And Ellipses 6**
- Manually Select Datamatrix Bar Code Sizes..... 7**
- Manual Code 128 Code Set Support..... 8**
- New Bartender VB Script Intrinsic Variables..... 8**
- Updated Stock Database 8**
- Enhanced User Interface 9**
 - Enhanced Toolbox Drag And Drop 9**
 - Standard Bar Code Folders 9**

Version 7.73 skipped: Please note that the distribution version of BarTender skipped directly from 7.72 to 7.74. (Version 7.73 was only distributed at a trade show early in 2006.)

Introduction

BarTender 7.74 introduces the following features to assist with the design of labels and the integration of printing with other software:

- ▶ New Support for XML Capable Printers
- ▶ New Advanced Label Media Handling
- ▶ Improved Page Setup
 - New Page Orientations and Effects
 - New Label Gap / Pitch Support
 - Selection of Paper Tray
- ▶ Circles and Ellipses
- ▶ Manually Select Datamatrix Bar Code Sizes
- ▶ Manual Code 128 Code Set Support
- ▶ New BarTender VB Script Intrinsic Variables
- ▶ Updated Stock Database
- ▶ Enhanced User Interface:
 - Enhanced Toolbox Drag and Drop
 - Toolbox Bar Code Folders

New Support for XML Capable Printers

Many printers are now able to directly receive XML packets that contain the data to print and the name of a label format stored in the printer. These XML packets can be sent by a variety of applications such as Oracle's Warehouse Management System (WMS), Oracle's Mobile Supply Chain Applications (MSCA), and SAP/R3. The structure of the XML packets supported by each label printer varies from one model to the next. However, in general, upon receipt of an XML packet, the printer will retrieve the specified stored format, populate the variable fields with data from the XML packet, and print the label.

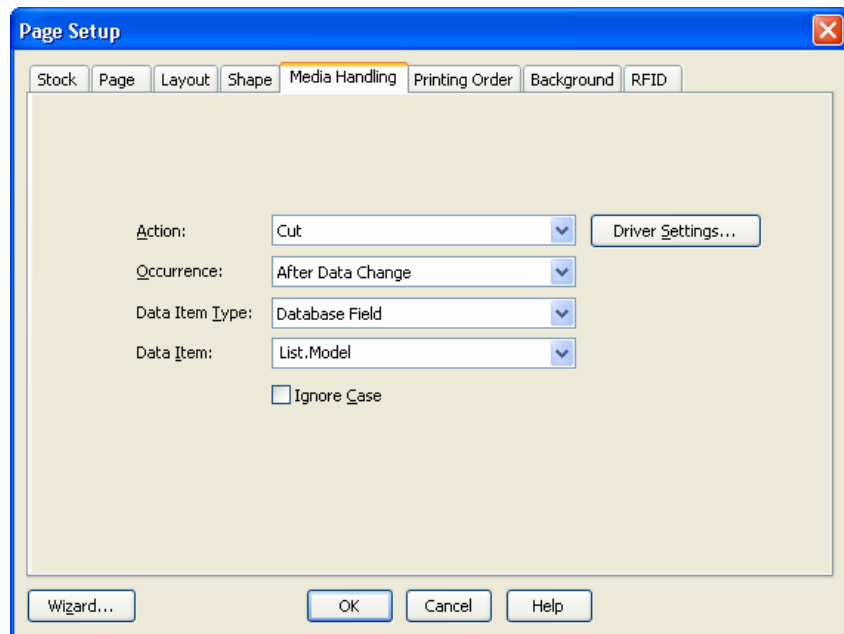
BarTender v7.74, with the help of Seagull Drivers v7.0.2 and later, is now able to generate the label formats that need to be stored in XML-compatible label printers. So, you get the full design capability of BarTender, even though BarTender won't be used at print time. After designing the label, simply use BarTender's **Export Printer Code Template** feature to generate a format file that is ready to be stored on the printer.

BarTender 7.74 comes with built-in Printer Code Template support for XML-enabled printers from Zebra, Datamax, Intermec and Printronix. In addition, you can design your own custom print systems to support future XML capable printers.

New Advanced Label Media Handling

Many label printers can perform media handling actions such as cutting or pausing between labels, or waiting for a “Label Taken” sensor to be tripped. BarTender 7.74, when used with Seagull Drivers 7.0.2 and later, supports a greater variety of cutting and pausing options. You can also more easily apply different media handling settings for your different label designs and print jobs.

Previously, label cutting and pausing options were set inside of Seagull drivers. By not only adding new options, but also allowing these to be set from inside of BarTender, you get more control of when to apply a media handling action. For example, you can choose to cut or pause after every print job, page, record, copy, or number of labels. You can even choose to cut or pause when a database field record, sub-string, or object string changes. Many different media handling actions are available based on your printer and Seagull Driver capabilities.



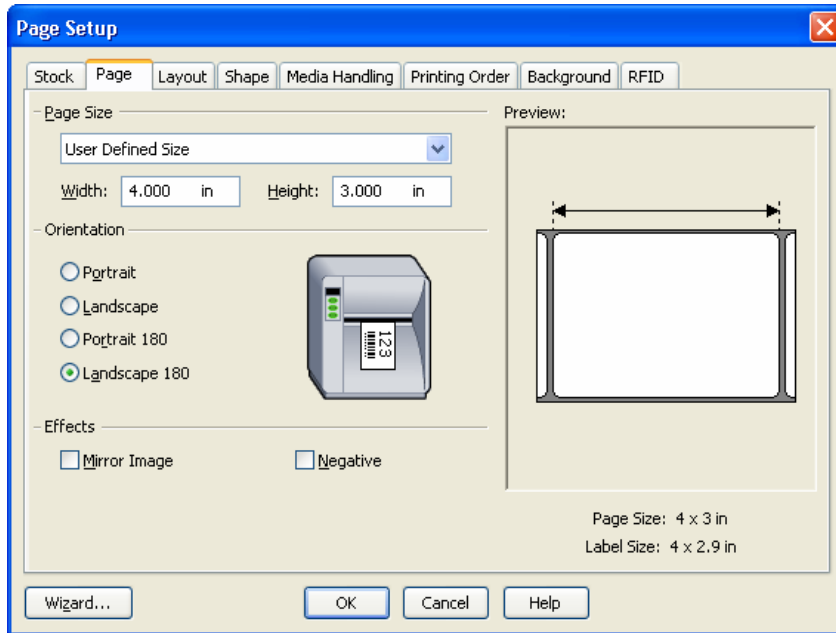
Automate Media Handling Options

BarTender 7.74 Media Handling options can be automated using the command line option /MediaHandling or by using the ActiveX Automation **MediaHandling** property for the **PageSetup** object. For more information see BarTender’s application help.

Improved Page Setup

New Page Options

BarTender 7.74 makes new **Orientation** and **Effects** options available when a Seagull printer driver is in use. You can now specify **Portrait 180** and **Landscape 180** orientations.

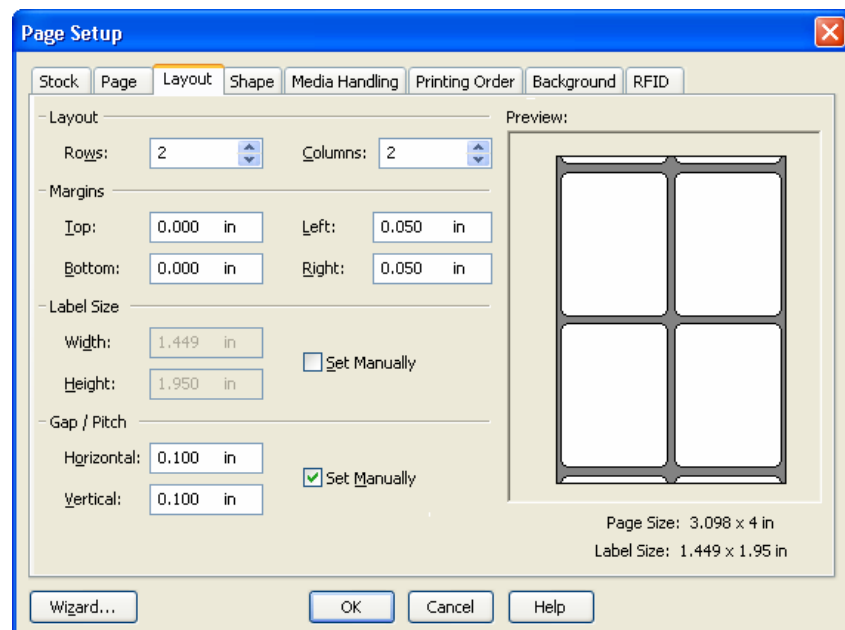


When you select one of these two settings, you will see the image of the label on the printer illustration rotate 180 degrees to show how the orientation differs from the standard output orientations for **Portrait** and **Landscape**. Finally, new **Effects** options allow you to print a mirror image of your label or have your label print as a negative inverse. Mirror label

images are particularly useful when you will be looking through a transparent label at the label image, such as you do on a car window decal.

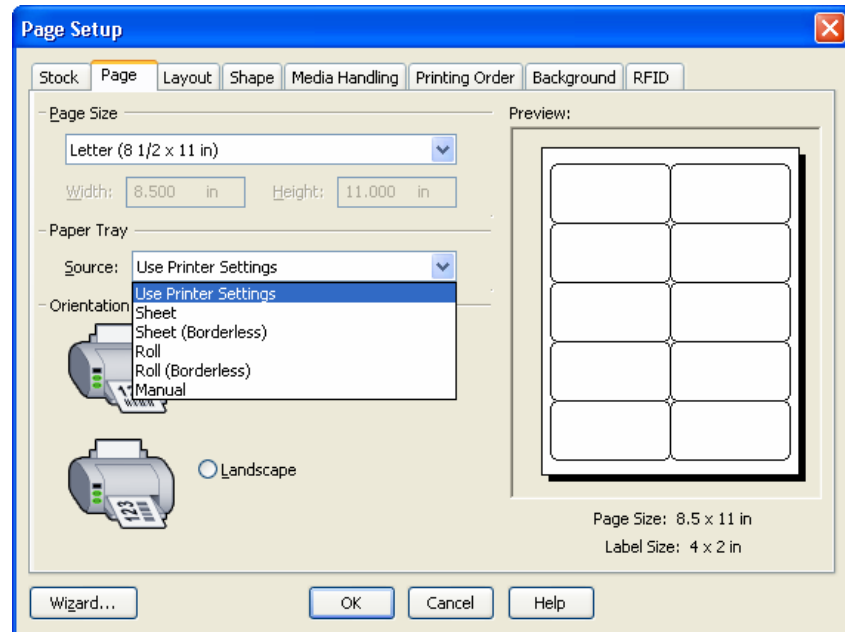
New Label Gap / Pitch Support

Manufacturers of label stock often describe their stock using label gap or pitch. BarTender 7.74 now supports entry of label gap in addition to the label's width and height.



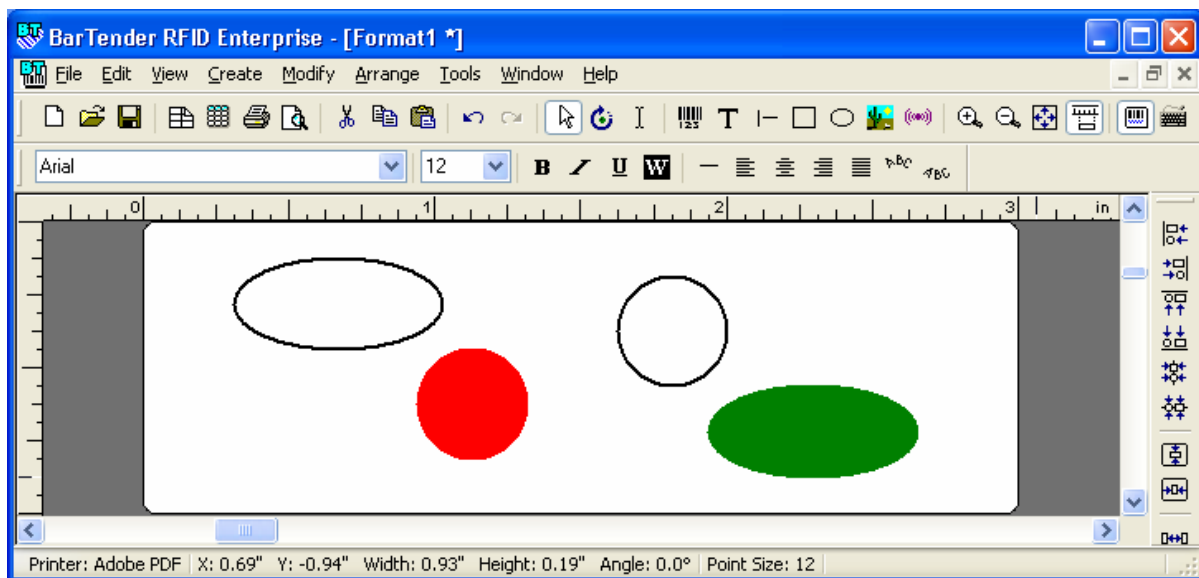
Tray Support

A printer may have multiple paper sources, such as upper tray, envelope feed, and manual feed. BarTender 7.74 now supports setting of the paper tray source from the Page Setup dialog (instead of only from within the printer driver). In addition, you can set the paper tray source using command line or ActiveX automation.



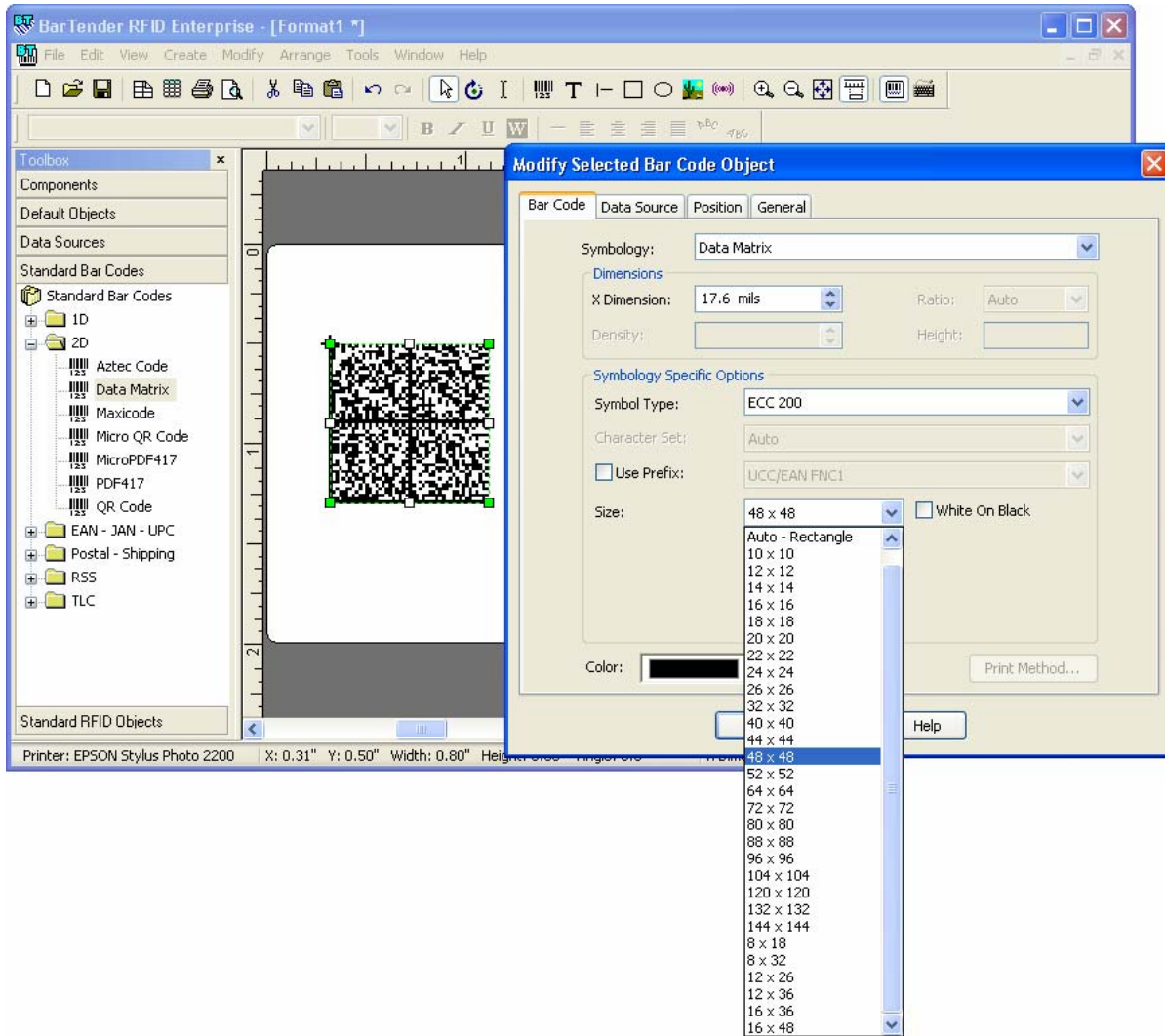
Circles and Ellipses

BarTender 7.74 now supports the creation of circles and ellipses. Perfect circles can be drawn by holding down the Shift key while drawing the ellipse.

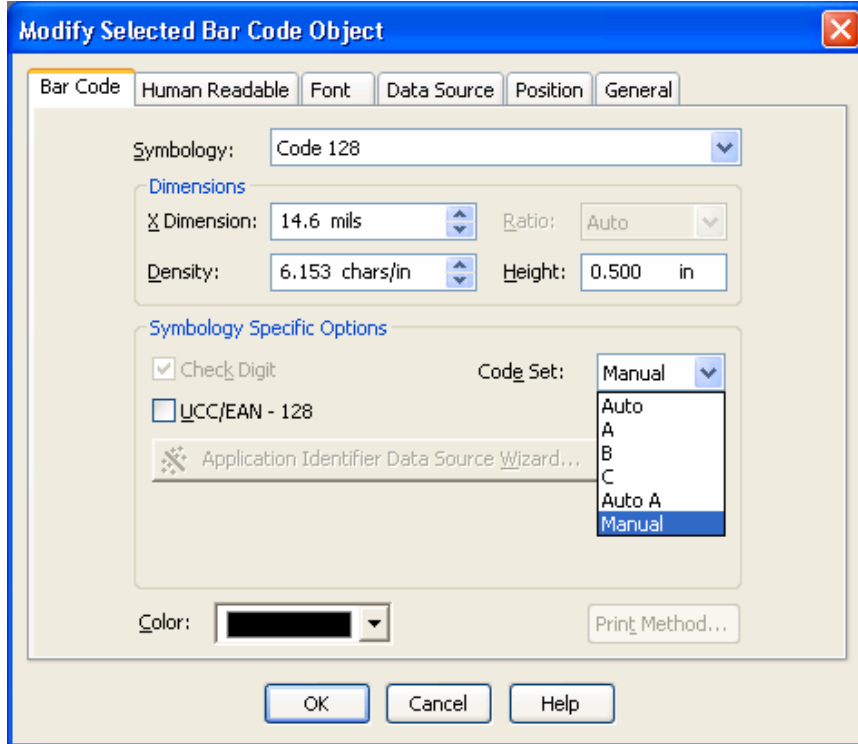


Manually select Datamatrix bar code sizes

Datamatrix has been enhanced to allow its size to be set manually from a number of standard sizes. Previously, the size of the Datamatrix bar code was automatically computed based on the amount of data to be encoded.



Manual Code 128 Code Set Support



It is now possible to manually change the Code 128 character code set for custom encoding applications. When using the Manual code set selection, the following codes are available to be used with your sourced data:

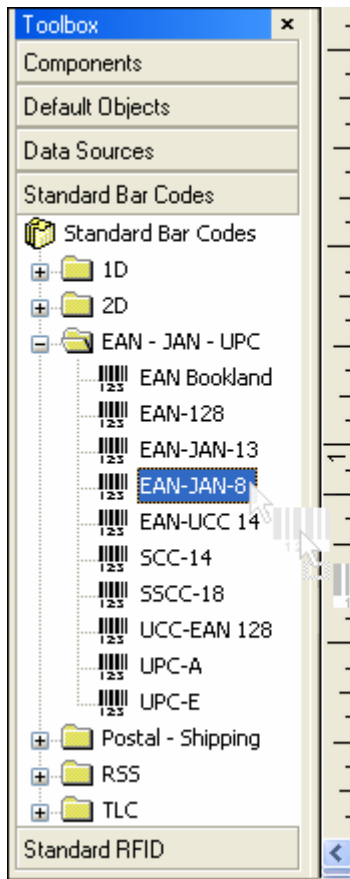
Code	Description
^A or ^a	Switch to code set A.
^B or ^b	Switch to code set B.
^C or ^c	Switch to code set C.
^S or ^s	Shift code set for the next character only (from A to B, or from B to A).

New BarTender VB Script Intrinsic Variables

Two new variables have been added to BarTender's VB Script engine **Application** object to obtain version and build information. For more information, see BarTender's application help section "Application Object (for internal Visual Basic scripting)" found in the help index.

Updated Stock Database

BarTender 7.74 increases our large industry stock database for quick selection of pre-configured page settings to more than 4300 stocks. Newly added stock manufacturers include Avery Dennison, Cognitive Solutions, Progressive Label, Racoco, and Intermec.

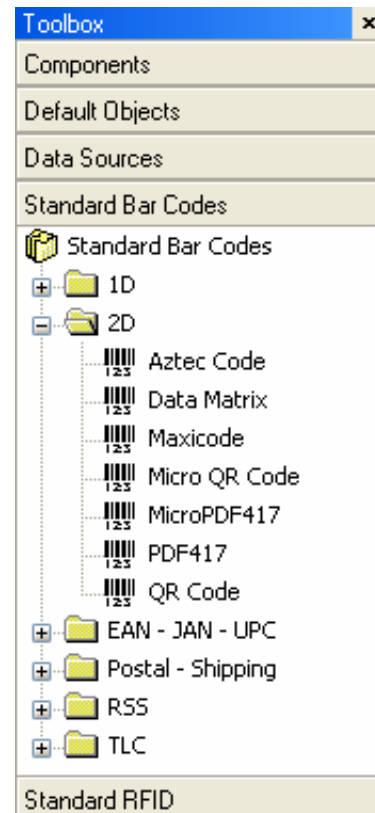


Enhanced Toolbox Drag and Drop

BarTender has supported a large list of standard bar codes, standard RFID, and sample components to make designing your labels easier. Now with BarTender 7.74, when you drag a component onto the label, you will see the component moving with your cursor to help easily place your object on the label where you want it the first time.

Standard Bar Code Folders

BarTender supports many different bar code symbologies and standards. BarTender 7.74 has added new folders to the Standard Bar Codes toolbox pane to help make it easier to find the right bar code needed for your task.



Available Seagull White Papers

General White Papers

- The Advantage of Drivers by Seagull
- Choosing the Right BarTender Edition
- What's New in the Latest BarTender

Integration White Papers

- Integration Overview
- Getting Started with ActiveX Automation Using C#
- Getting Started with ActiveX Automation Using VB.NET
- Getting Started with ActiveX Automation Using VB6
- Commander
- Commander Examples
- Exporting Printer Code Templates
- Using BarTender with Terminal Services and Citrix MetaFrame
- XML Integration with Oracle's WMS and MSCA

SAP Integration White Papers

- SAP Integration Methods
- Reading SAP IDocs

Miscellaneous White Papers

- BarTender Enterprise Licensing
- Printing Foreign Text Using BarTender
- BarTender Software Activation
- Using BarTender's Application Identifier Wizard
- Optimizing Label Printing Performance
- Status Monitor Overview

For downloadable versions, visit:

www.seagullscientific.com/aspx/whitepapers.aspx

